



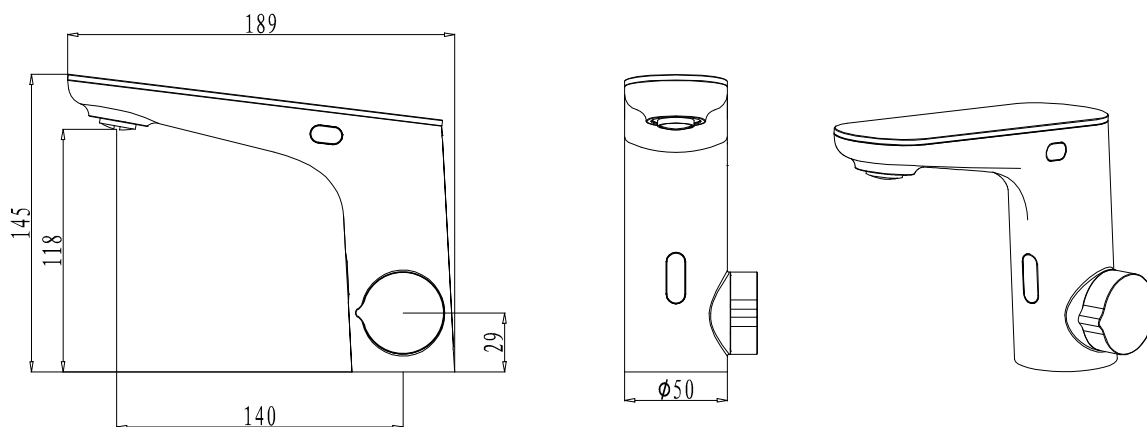
## SENSOR FAUCET MIXER SFT38-002D



### Specifications

BRAND	BELLA	PRODUCT TYPE	SENSOR FAUCET MIXER
RANGE	PREMIUM	COLOR/FINISH	CHROME
PRODUCT CODE	SFT38-002D	MATERIAL	BRASS

### Drawing

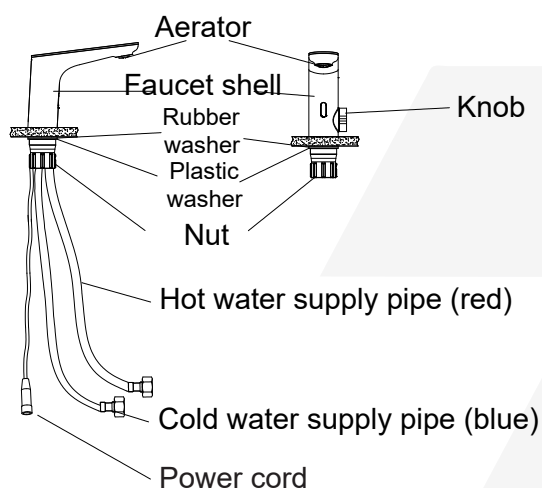


\*All dimensions are in mm

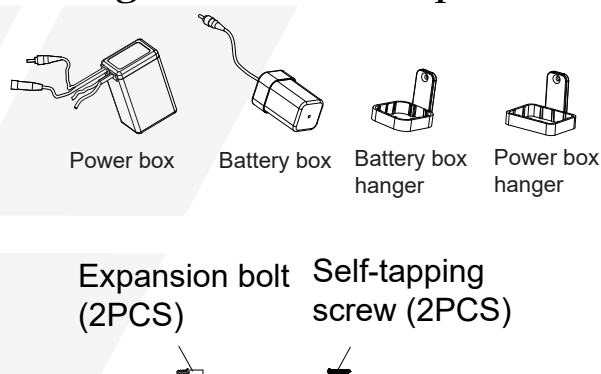
# TECHNICAL DATA-SHEET

Description	Dual-sensor Faucet with Temperature Adjustment
Power	100-240V, 50/60Hz. 4pcs of AA alkaline batteries
Induction distance	Main induction: 30±2cm; Side induction: 10±2cm
Work water pressure	Static pressure 0.05MPa-0.8MPa
Work temperature	Ambient temperature 1°C-45°C; Water temperature 4°C-75°C. Do not use steam.
Shank	G1/2

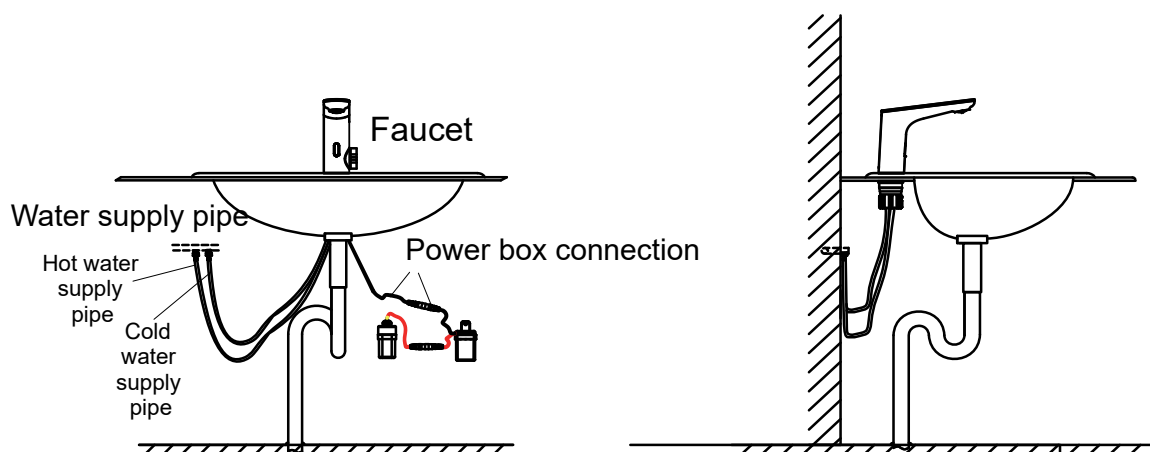
## Parts Name



## Fittings for AC and DC power

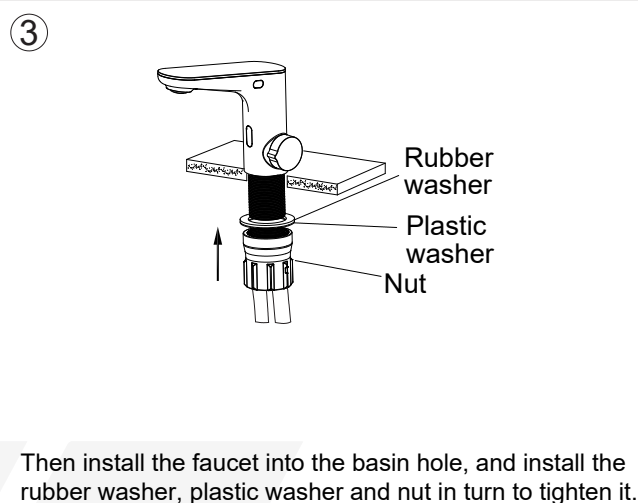
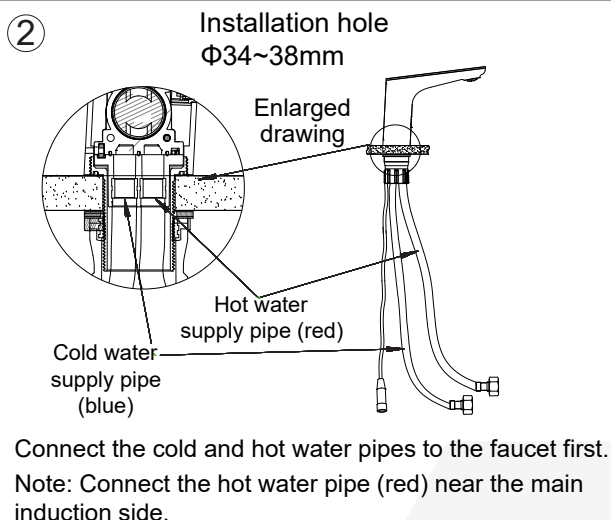


## Installation Diagram

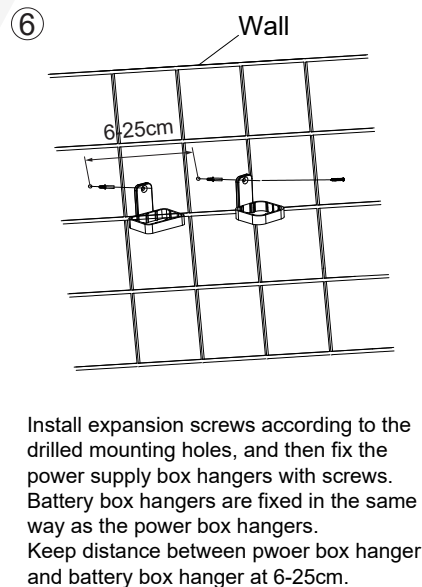
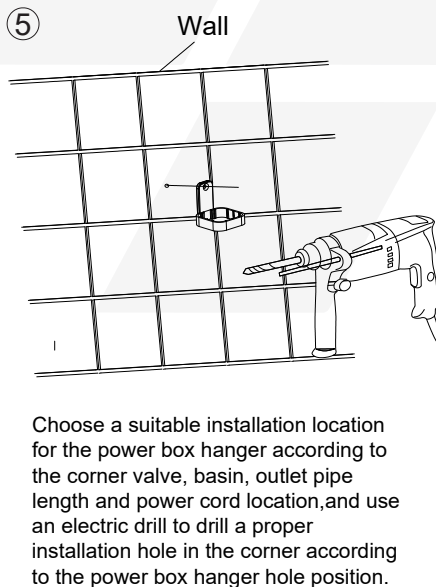
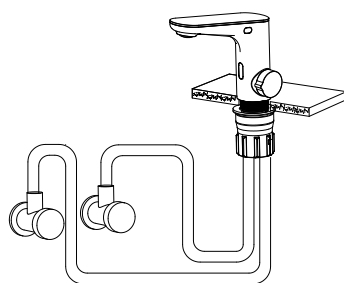


## Installation steps

- ① Note: Before installation, be sure to rinse the water supply pipe clean of sand, impurities, etc.



- ④ Connect hot and cold water supply pipes to angle valve.

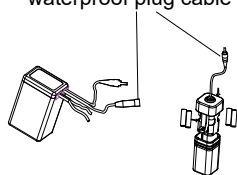


- ⑦ The lead of the power box is connected to the AC power.

⚠ Note: This should be operated by electrical professionals, and ensure the sealing insulation of the interface. Please turn off the power when installing AC power supply to ensure safety.

## ⑧ Connect battery box if the product is with AC and DC power.

Power box waterproof plug cable and battery box waterproof plug cable are connected

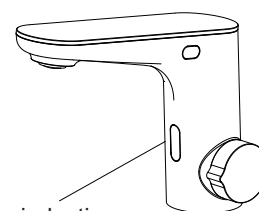


One end of the power box is connected to the faucet's power cord, and the other end is connected to the battery box. How to use the battery box: remove the battery box, load four AA batteries (when the lid is snapped off, squeeze the side of the rubber plug with your fingers to expel the air from the box to ensure the sealing effect), and then lock the top lid.

## ⑨ Trial use of induction function

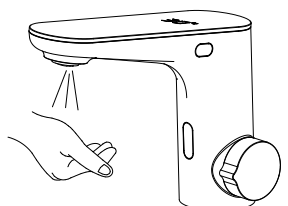
Turn on the power, open the angle valve to test the water, please check whether there is water leakage at each connection.

Note: When the power is just turned on, the indicator light will be on for each trial; after 5 minutes of power connection or 20 trials, the indicator light will no longer be on when using.



Main induction indicator

## Usage Instruction



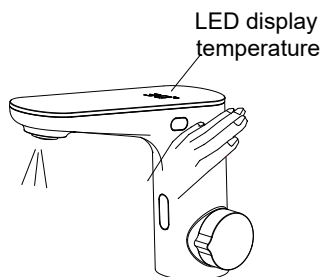
Water comes out when hand is into the induction area



Water stops after hand moving away

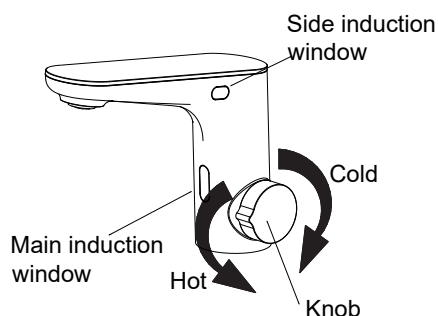
### Instruction of main induction

1. Hand into the main induction area, water automatically comes out ; water stops after 0.5~2 seconds hand moving away.
2. Water is running for 30 seconds when hand keeps staying in the induction area, then stops automatically. Put hand into the induction area to repeat this cycle.



### Instruction of side induction

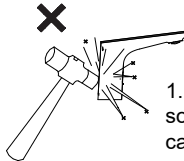
1. Hand waving in side induction area, water automatically comes out; hand waving again to stop the water.
2. Water stops automatically after 60 seconds. Wave hand again to repeat the cycle.



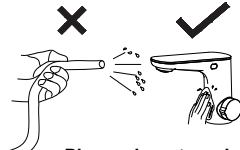
### Instruction of knob

Rotate the knob clockwise to reduce the temperature and counterclockwise to increase the temperature.

## Maintenance

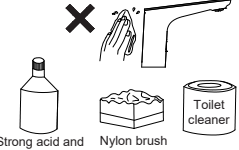


1. The product contains electronic circuits and some plastic parts, please use the product with care to avoid damage caused by strong impact.



2. For maintenance, please use a soft cloth with neutral detergent first; then wipe off the detergent and dirt with a wrung out wet soft cloth, and then dry with a dry soft cloth.

**Please do not wash directly with water to avoid malfunction.**



3. Do not clean and scrub the product with detergents containing coarse powder such as decontamination powder and abrasive powder, thinner, volatile oil, strong acid and alkaline detergents, or nylon brushes. To avoid damage to the product appearance and internal wiring.

Special attention: Do not damage the surface of the induction window, which may affect the induction distance.

## Do's and Don'ts

1. Please read this manual carefully before installing and using.
2. The battery must be alkaline battery no. 5, and the battery brand must be consistent.
3. Check the water in the water pipe is clean before installing the induction hand washers; if not, please flush the water in the water pipe till it is clean to before installation.
4. Since the product contains electronic circuits and some plastic parts, please use the product with care to avoid damage caused by strong impact.
5. The using environment should avoid direct sunlight to induction window, so as not to affect the induction distance.

## Trouble Shooting

Problem	Cause	Solution
No water	Induction window is dirty	Clean the induction window
	Water supply is off	Check water supply
	There might be obstacle in front of induction window	Remove the obstacle
	Filter is dirty	Clean the filter
	Water or power is off	Wait till water or power is on
Water keeps running out continuously	Sensor is dirty	Clean the induction window
	There might be obstacle in front of induction window	Remove the obstacle
Poor water	Water volume is too small	Increase water volume by adjusting angle valve
	Filter is dirty	Clean the filter
	Water pressure is too low	Check water supply system
Reversing temperature	The cold and hot water supply pipes are connected in reverse	Connect cold and hot water supply pipes in correct position
Temperature unadjustable	The cold and hot water supply pipes are jammed	Clean water supply pipes
	Angle valve of cold or hot water supply is off	Turn on the angle valve