



BASIN MIXER

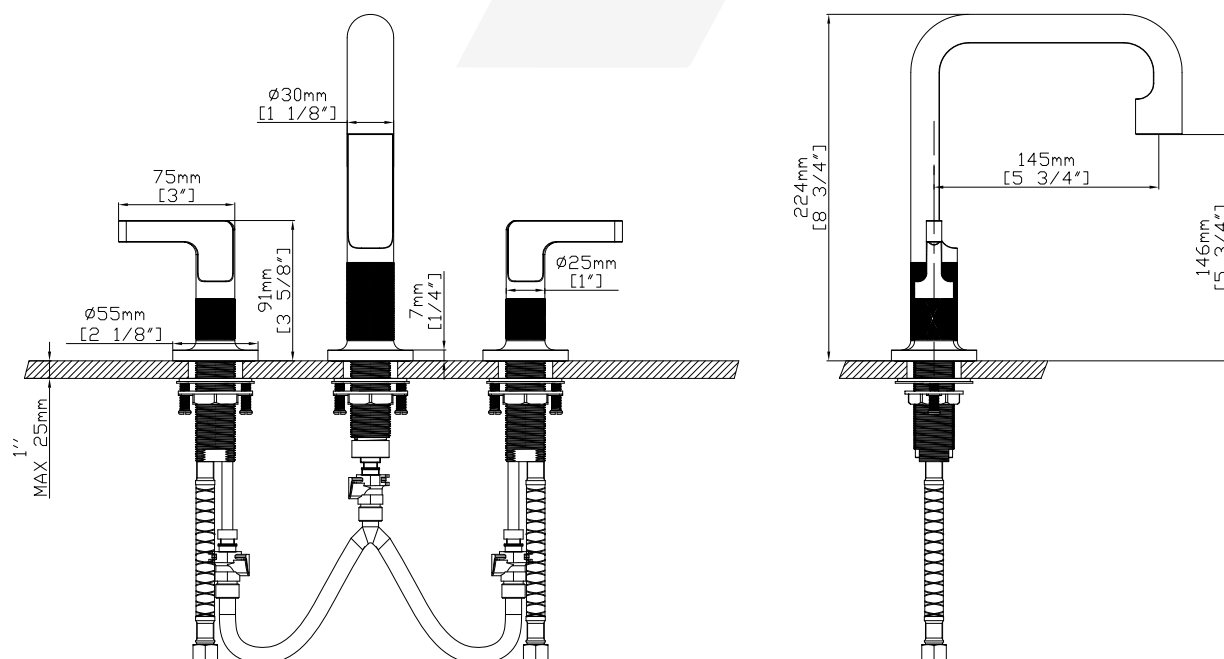
BM 366529



Specifications

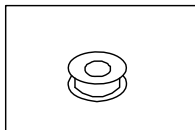
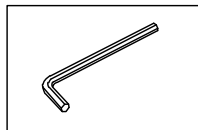
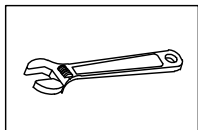
| | | | |
|--------------|-----------|--------------|--|
| BRAND | BELLA | PRODUCT TYPE | THREE HOLE BASIN MIXER |
| RANGE | PREMIUM | COLOR/FINISH | BRUSHED GOLD, NICKEL & SHINY ROSE GOLD |
| PRODUCT CODE | BM 366529 | MATERIAL | BRASS |

Drawing



*All dimensions are in mm

INSTALLATION MANUAL Tools You Will Need :



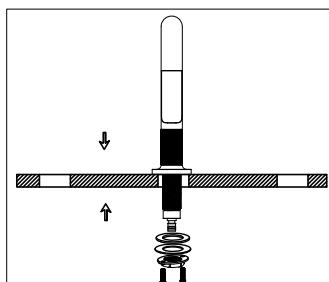
Adjustable wrench Hexagon wrench Pipe Tape

NOTES BEFORE INSTALLATION :

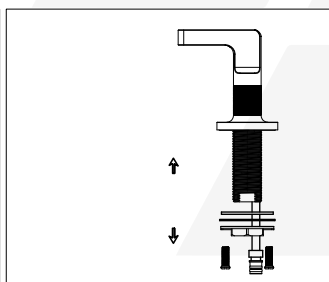
- 1.PLEASE CHECK THAT ALL COMPONENTS ARE PRESENT.
- 2.BEFORE INSTALLATION ENSURE THAT ALL FEED LINES ARE CLEAR OF DEBRIS AND ON/OFF VALVE IS PRESENT.
- 3.ENSURE WATER PRESSURE IS BETWEEN 0.1-8 BAR (INCLUDES COMBINATION OF HOT AND COLD FEED LINES).
- 4.PICTURES IN THE MANUAL ARE GENERAL IN CONTENT AND MAY NOT REPRESENT EXACTLY YOUR PURCHASED FAUCET. IF YOU ARE HAVING DIFFICULTIES PLEASE CONTACT A PROFESSIONAL PLUMBER.
- 5.IF YOU WILL BE AWAY FROM HOME FOR AN EXTENDED PERIOD YOU SHOULD SHUT OFF THE MAIN WATER SUPPLY.

DAILY MAINTENANCE

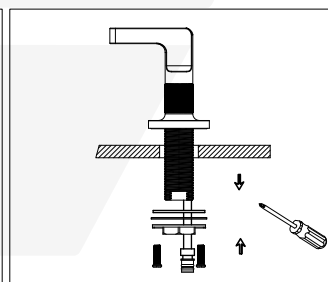
- 1.USE A SOFT CLOTH AND VINEGAR TO REMOVE HARD-WATER SPOTS.
- 2.CHECK AERATOR (IF PRESENT) REGULARLY FOR CALCIUM BUILD UP ARE WHEN WATER STREAM IS NOT OPTIMUM.
- 3.DO NOT USE CAUSTIC CLEANING PRODUCTS AS THE USE WILL BREAK DOWN FINISH AND WILL VOID THE PRODUCT WARRANTY.
- 4.ACCEPTABLE CLEANERS INCLUDE VINEGAR OR MILD NON-ABRASIVE LIQUID DETERGENTS.
- 5.IF THE WATER PRESSURE APPEARS TO BE LESS THAN OPTIMUM REMOVE, INSPECT, CLEAN OR REPLACE AERATOR.



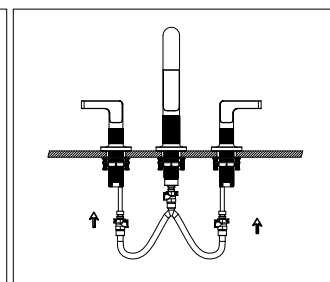
1.Remove the lock nut and washer from the spout body.Place spout in center hole of sink.Assemble washer and tighten the lock nut to it.



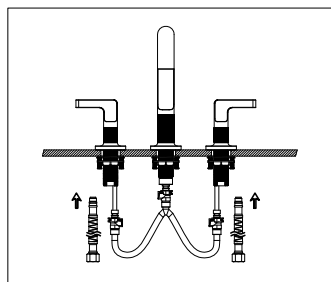
2.Remove mounting hardware from handle body.



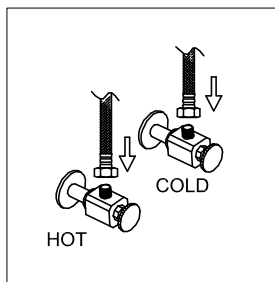
3.Place the spout in center hole of sink and handle body through right hole. (Left is red,right is blue).Assemble the rubber washer,washer and tighten with lock nut.



4.Connect handle body and faucet body with hoses.



5.Screw and tighten the flexible hose to the faucet.Left is red,right is blue.Do not allow the water supply brass tube to twist.



6.Attach flexible hose to water supply.7.After installing faucet, remove the aerator, turn on faucet handle for one minute to flush debris from faucet. Close the handle and reassemble the aerator.

