



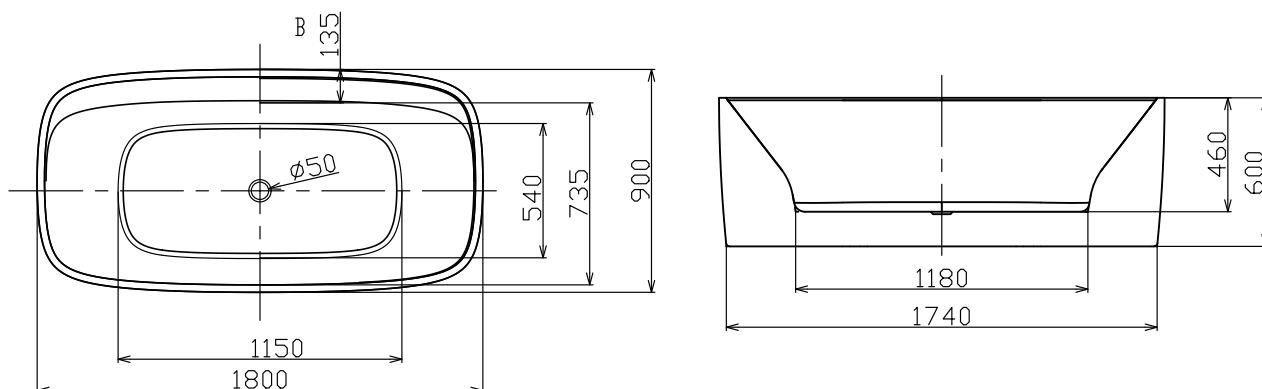
## BATHTUB BL 81900



### Specifications

BRAND	BELLA	PRODUCT TYPE	BATHTUB
RANGE	PREMIUM	COLOR/FINISH	WHITE
PRODUCT CODE	BL 81900	MATERIAL	CERAMIC COATED ACRYLIC
MOUNTING TYPE	FLOOR FREESTANDING	SIZE	1800 X 900

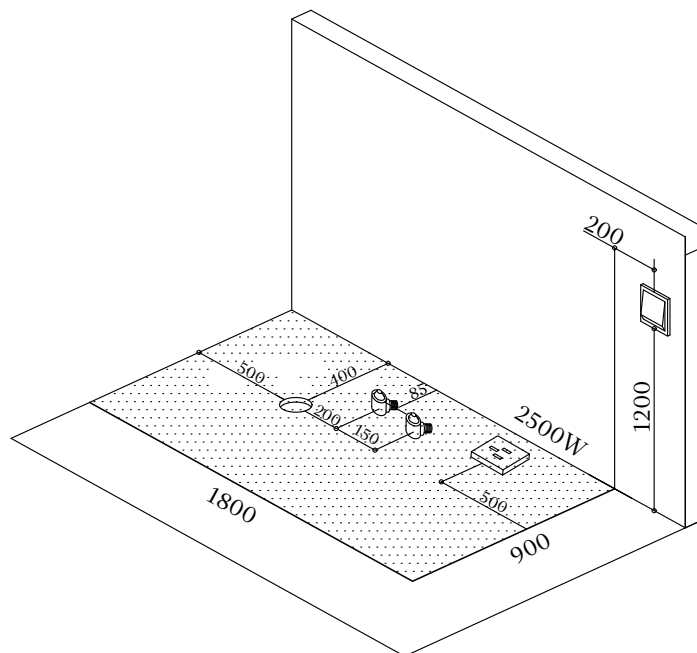
### Drawing



### Functions

Bubbles , Light & Temperature control

\*All dimensions are in mm



## I. Precautions:

1. Please carefully read and well maintain the instructions before installing the product.
2. The machine system must be installed by professional technicians. The plug of the leakage switch should be installed in the place of convenient operation. Be sure to check the input voltage before installation to make sure the frequency in line with the machine ratings.
3. An extra leakage switch must be installed. The leakage switch of the machine is only for complementary use.
4. The carrying capacity of the power supply line should be taken into account before installation. Otherwise, the normal operation of system will be affected.
5. The ground wire should be reliably grounded (check whether the ground is well connected with the ground before using).
6. The motor must be grounded.
7. Don't connect other lines in the center of power conductor or prolong the power conductor. And don't pile up heavy goods on the power conductor or put the power conductor near the heat source at high temperature.
8. Don't cut off the power (e.g. plug off the power plug) when the message bathtub is running. The power should be cut off when the machine isn't used for a long time. Don't pull out the power wire to cut off the power but take hold of the power plug and then pull it out to prevent parts of the core wire of the power wire being pulled broken.
9. When the message bathtub operates improperly such as abnormal noises and peculiar smell, turn off the machine immediately and pull out the power plug and then contact with the factory or the distributor. Don't repair it by yourself.
10. Don't let the children to use the message bathtub alone. The children should be accompanied by adults.
11. Turn off the machine and cut off the power before cleaning the bathtub.
12. The message bathtub should be cleaned by the ordinary liquid detergents and soft cloth. Don't use the detergents containing the acetone or architectural ammonia, Tiana or other corrosive liquid, or coarse materials to clean the surface of the bathtub to prevent the damage of the superficial brightness.
13. Avoid the attack or strike of hard or sharp objects to prevent damage; meantime, the heat source which is higher than 80 degrees like the cigarette end is prohibited to touch the surface of the bathtub.
14. Water return gauze containing filter parts, when the nozzle solw down, need to filter the accessories.

## II. Installation instructions

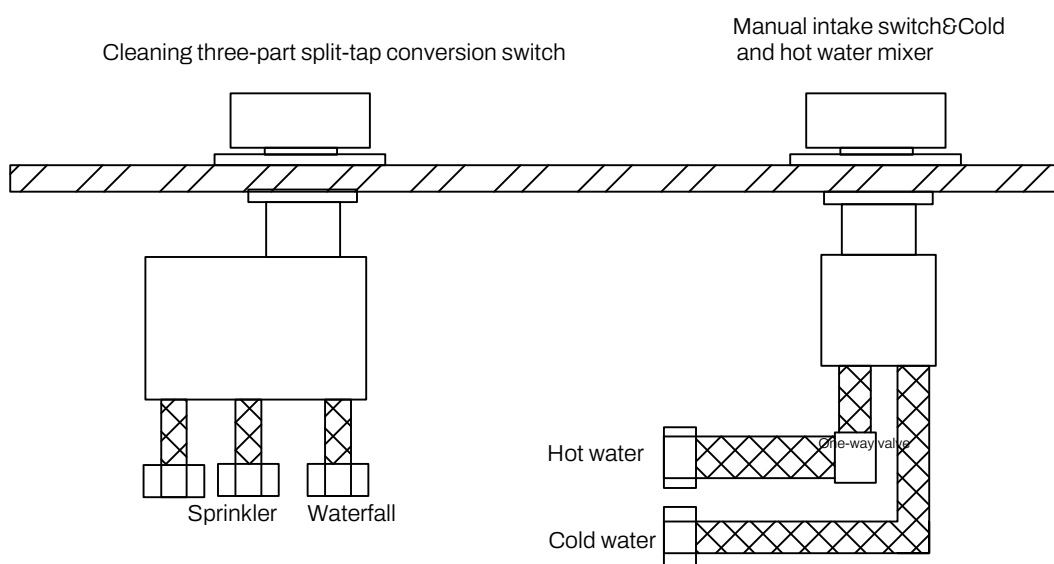
### 1. Dewatering installation

Users can reserve the dewatering position according to the situation of the washing room. When they do not match, soft pipes can be used to connect.

### 2. Water supply installation

#### (1) Water inflow

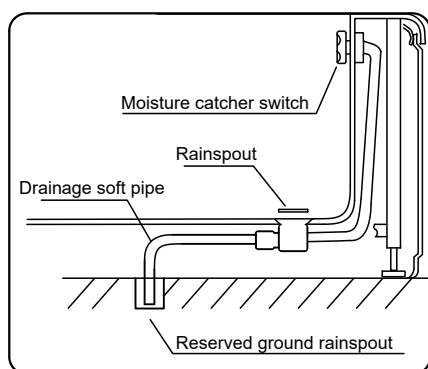
The water hardware has been well connected before it is delivered from the factory. Users only need to connect the cold and hot water pipes to the corresponding water pipe or nipple which is in the hidden place behind the bathtub, as is shown in the following figure.



Cautions: if there is no intake waterfall, intake pipes and cleaning pipes are used together.

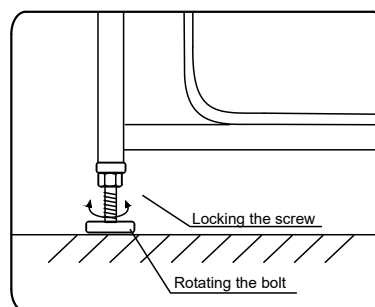
#### (2) Drainage

Connect the bathtub drainage to a suitable rainspout through soft pipes, as is shown in the following figure.



#### 3. Bathtub leveling

Users can level the bathtub to horizon by rotating the foot screw, and then use a wrench to tighten the nut which is above the foot screw.



### III. Maintenance of the bathtub

1. Don't use the acid or strongly alkaline detergents and organic solvents (such as alcohol, Tiana, architectural ammonia, acetone, etc) to clean the surface of the product (including the surface of composite boards, plastic components, aluminum components, galvanized components, spraying components, etc). The neutral detergents are suggested for cleaning.
2. Keep the bathtub clean and prevent the hair and miscellaneous objects occluding the drainage pipe.
3. Polish the machine with the polishing agent to keep the surface bright.
4. Pulverize the surface on the raw with the dental cream and soft cloth if the surface is galled or burnt by the cigarette.
5. Maintenance of galvanized components: clean the galvanized components with the flannel but not the coarse cloth and organic solvents.
6. Maintenance of the bathtub body: when there are scale and dirty spot, clean the bathtub with the soft cloth and dental cream.
7. Cleaning of the hydraulic message device: heat the bathtub at 40 degrees, add the detergent as per 2g every liter, start up the hydraulic message device for about 5 minutes, stop the pump, drain the water, then fill it with the cold water, start up the hydraulic message device for about 3 minutes, stop the pump, drain the water, and clean the bathtub.
8. Don't add excessive vegetal cosmetic during the hydraulic message to prevent the block of the water return.
9. Clean the water return guard of the pump for every 30 hours to prevent the block. The method is to rotate the guard in counter clockwise direction, withdraw and clean the guard, and then install it in the original place.