



CONCEALED BASIN MIXER

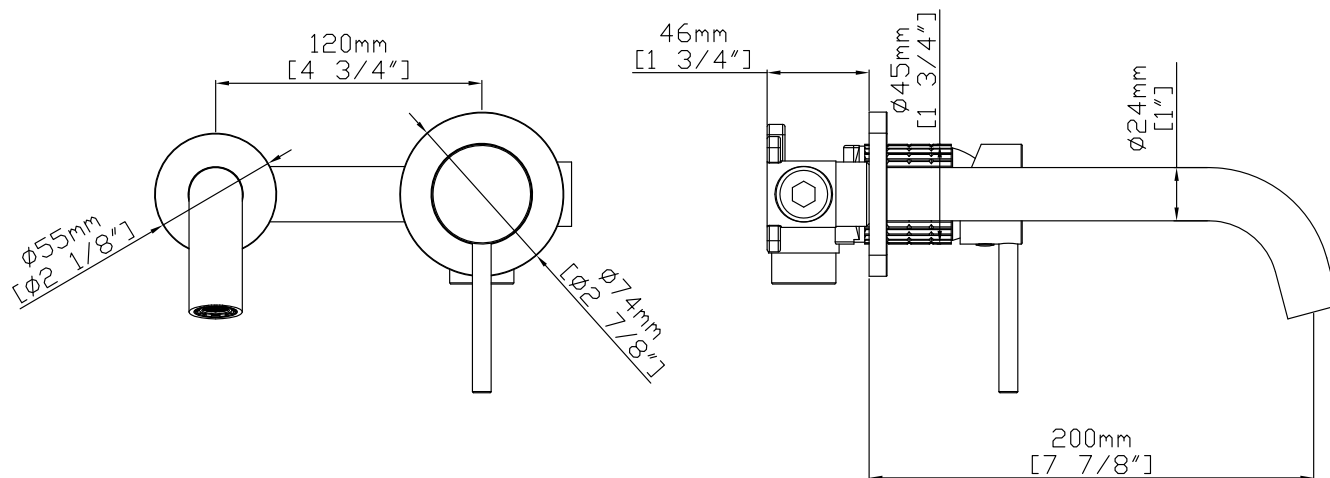
BM 366428



Specifications

BRAND	BELLA	PRODUCT TYPE	CONCEALED BASIN MIXER
RANGE	PREMIUM	COLOR/FINISH	BRUSHED GOLD, GUN METAL
PRODUCT CODE	BM 366428	MATERIAL	BRASS

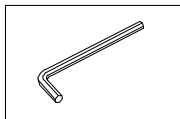
Drawing



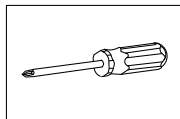
*All dimensions are in mm

Installation Manual

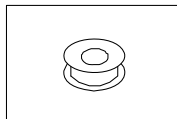
Tools you will need:



Hexagon wrench



Philips Screwdriver



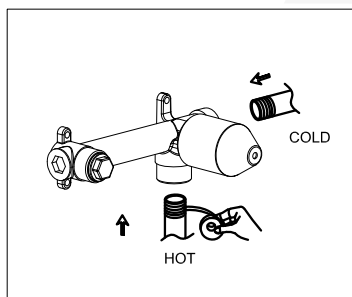
Pipe Tape

Notes before installation :

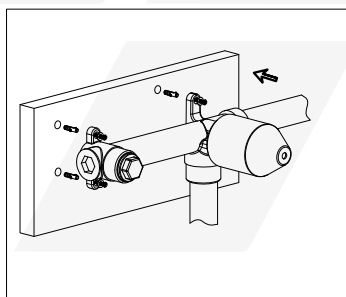
1. Please check that all components are present.
2. Before installation ensure that all feed lines are clear of debris and on/off valve is present.
3. Ensure water pressure is between 0.1-8 BAR (includes combination of hot and cold feed lines).
4. Pictures in the manual are general in content and may not represent exactly your purchased faucet. If you are having difficulties please contact a professional plumber.
5. If you will be away from home for an extended period you should shut off the main water supply.

Daily maintenance

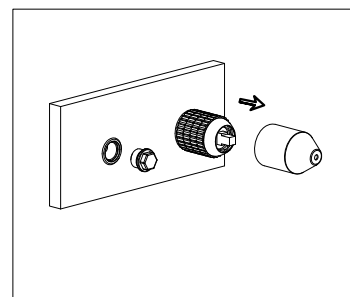
1. Use a soft cloth and vinegar to remove hard-water spots.
2. Check aerator (if present) regularly for calcium build up are when water stream is not optimum.
3. DO NOT use caustic cleaning products as the use will break down finish and will void the product warranty.
4. Acceptable cleaners include vinegar or mild non-abrasive liquid detergents.
5. If the water pressure appears to be less than optimum remove, inspect, clean or replace aerator.



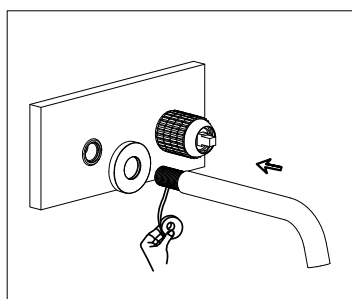
1. Use the pipe tape around the water pipe then connect to the hot and cold water pipe.



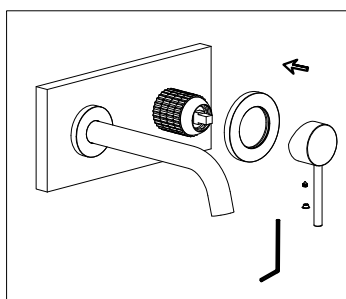
2. Fix the body of the basin faucet into the wall.



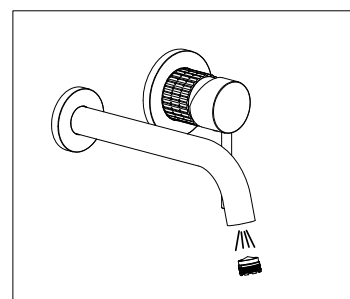
3. Remove the protection cover and plug.



4. Wrap the thread of spout with teflon tape (ensure it must wrap clockwise). Screw-in to the inlet pipe inside the wall.



5. Install the decorative cover on the wall clingy, then use the hexagon wrench to install the handle.



6. After install the faucet remove the aerator, turn on faucet handle for one minute to flush debris from faucet, close the handle and reassemble the aerator.